

INDUSTRIAL FOR LEASE

1019 & 1029 Industrial Ct, Suwanee, GA



Address	1029 Industrial Ct	1019 Industrial Ct
Total SF	±13,590	±12,080
Office SF	±957	±1372
Clear Height	14'-16'	14'-16'
Drive-In Doors	3 (12' x 14')	2 (12' x 14')
Dock-High Doors	2 (10' x 10')	2 (10' x 10')
Truck Court Depth	125' separation at front; 165' at rear truck court	125' separation at front; 165' at rear truck court
Column Spacing	Clear Span	Clear Span
Electrical Service	200—225A, 120/208 & 120/240V power	200—225A, 120/208 & 120/240V power
Roof Type	Low slope, metals panels	Low slope, metals panels



Harrison Auerbach

SVP & Director

(404) 445-1092

harrison.auerbach@matthews.com

License No. 451527 (GA)

Thomas Wilkinson

Senior Associate

(404) 348-4945

thomas.wilkinson@matthews.com

License No. 416083 (GA)

Broker of Record

Maxx Bauman

License No. 451849 (GA) | Firm No. 80041 (GA)

1019 & 1029 INDUSTRIAL CT, SUWANEE, GA



Site Plans



Contact Broker
For Lease Rate



±25,670 SF
Offering GLA



14'-16'
Clear Heights



Market Aerial

Harrison Auerbach

SVP & Director

(404) 445-1092

harrison.auerbach@matthews.com

License No. 451527 (GA)

Thomas Wilkinson

Senior Associate

(404) 348-4945

thomas.wilkinson@matthews.com

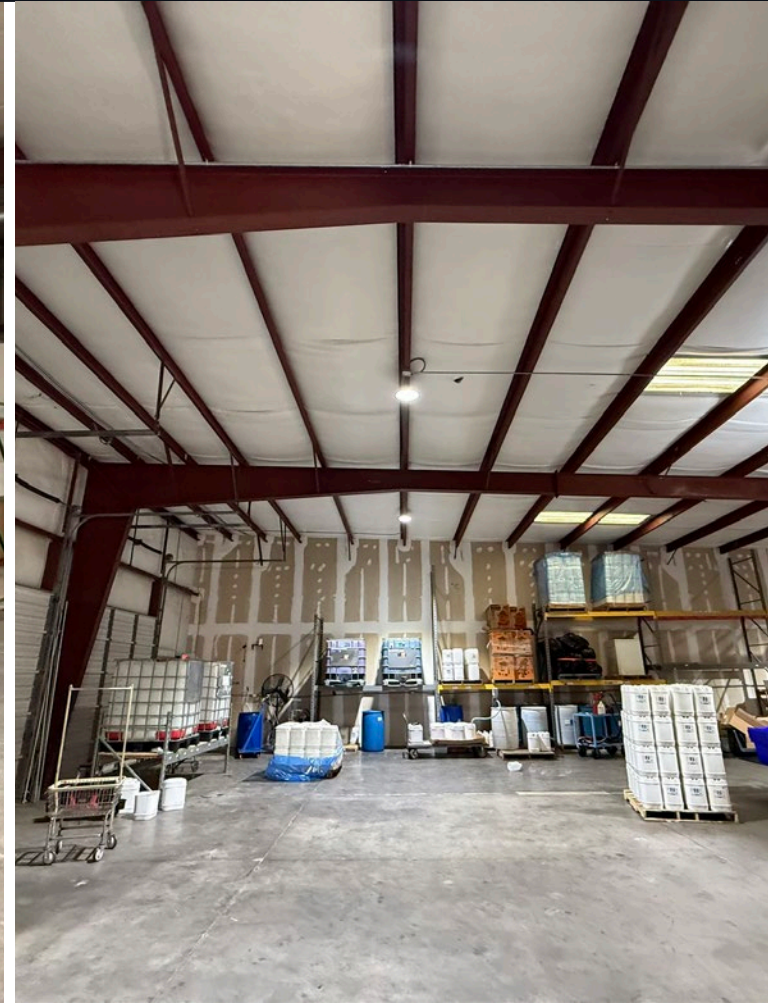
License No. 416083 (GA)

Broker of Record

Maxx Bauman

License No. 451849 (GA) | Firm No. 80041 (GA)

1019 & 1029 INDUSTRIAL CT, SUWANEE, GA



Harrison Auerbach

SVP & Director

(404) 445-1092

harrison.auerbach@matthews.com

License No. 451527 (GA)

Thomas Wilkinson

Senior Associate

(404) 348-4945

thomas.wilkinson@matthews.com

License No. 416083 (GA)

Broker of Record

Maxx Bauman

License No. 451849 (GA) | Firm No. 80041 (GA)

1019 & 1029 INDUSTRIAL CT, SUWANEE, GA



Harrison Auerbach

SVP & Director

(404) 445-1092

harrison.auerbach@matthews.com

License No. 451527 (GA)

Thomas Wilkinson

Senior Associate

(404) 348-4945

thomas.wilkinson@matthews.com

License No. 416083 (GA)

Broker of Record

Maxx Bauman

License No. 451849 (GA) | Firm No. 80041 (GA)